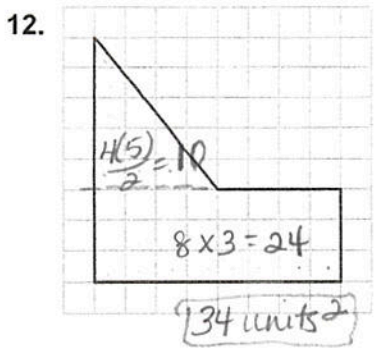
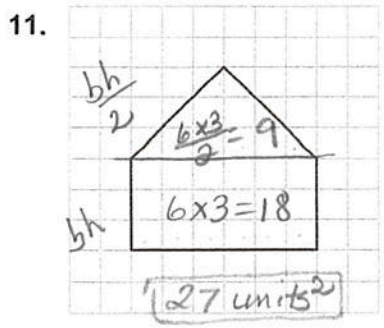


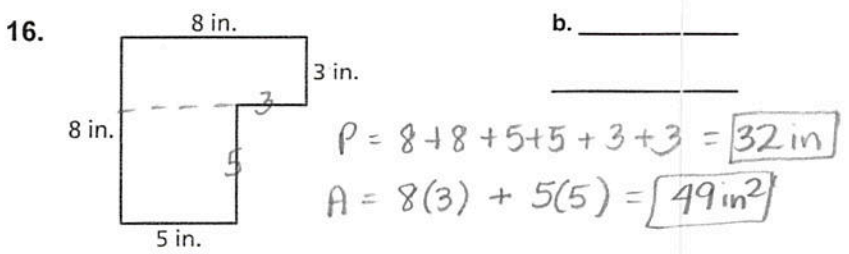
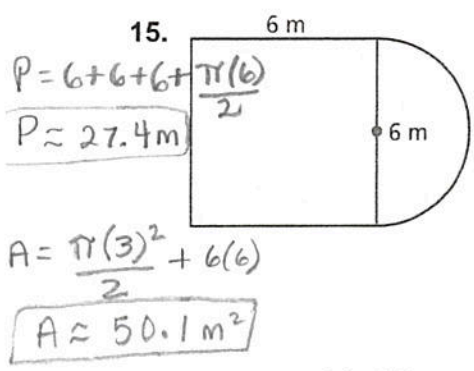
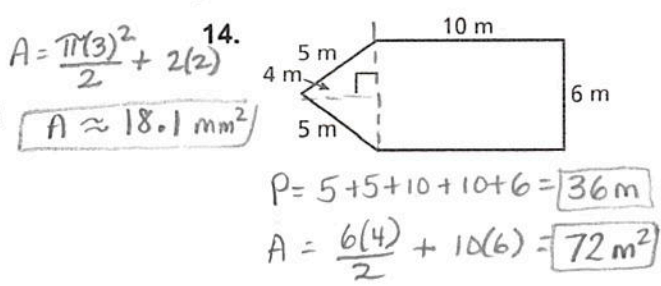
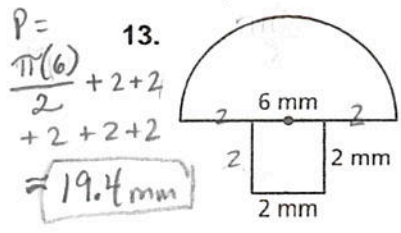
Chapter 8

Find the area of the figure.

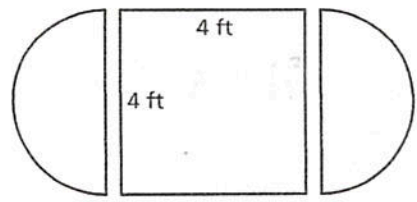


- Answers**
11. _____
12. _____
13. _____
14. _____
15. _____
16. _____
17. a. _____
- b. _____

Find the perimeter and area of the figure. Round to tenth.



17. A square table 4 feet on each side has two drop leaves, each a semicircle 4 feet in diameter.



Square	circle
$A = 4(4)$ $A = 16 \text{ ft}^2$	$A = \pi(2)^2$ $A \approx 12.6 \text{ ft}^2$
$P = 4(4)$ $P = 16 \text{ ft}$	$C = \pi(4)$ $C \approx 12.6 \text{ ft}$

- a. Find the area of the table with and without the drop leaves.
(with) 28.6 ft^2 and (without) 16 ft^2
- b. Find the perimeter of the table with and without the drop leaves.
(with) 28.6 ft and (without) 16 ft